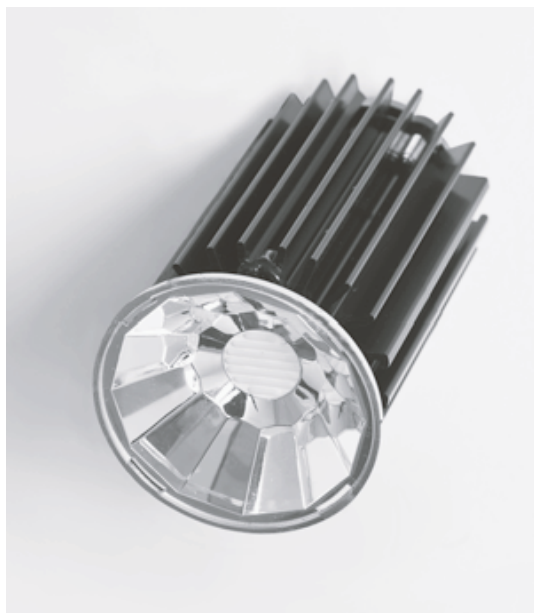


Product technical sheet

MACROLUX

MACROLUX s.r.l. 31020 San Vendemiano Treviso - Italia Via Padania, 67/70 t. +39 0438 470773 f. +39 0438 470295 p. iva 03547130264 macrolux@macrolux.net www.macrolux.it

Product code 11.50.--.02.--

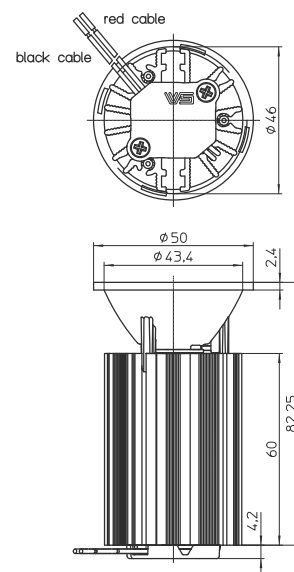
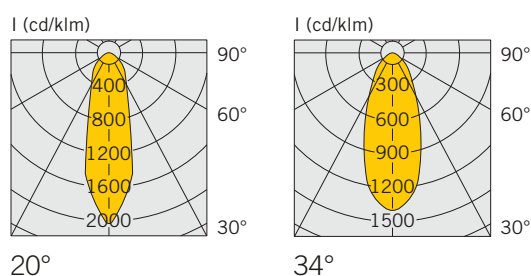


LED COB 50 9W

LED spot equipaggiato con ottica, dissipatore passivo in alluminio e connettori

Technical notes

Reflector: Ø 50 mm
 Max operating temperature at tp point: 85 °C
 Lumen maintenance:
 L90/B10; 50,000 hrs. at 65 °C
 Temperature depends on installation situation.
 Colour accuracy initially: 3 SDCM;
 after 50,000 hrs. operating time: 4 SDCM
 Leads: Cutinned, stranded conductors AWG22,
 PVC-insulation, length: 200 mm
 With integrated cord grip



Code	Color Temperature (°K)	Typ. luminous flux and typical voltage (U _{typ.}) and power consumption (P _{el})* 500 mA (lm)	Light intensity at max. current Candela	Beam angle °	CRI Ra	Energy efficiency at max. current
Narrow beam angle: 20°		P _{el} = 8,9 W, U _{typ.} = 29.2 V				
11.50.3000.1200.20.--	3000	1025	2170	20	>90	A++
11.50.2700.1200.20.--	2700	1020	2050	20	>90	A++
11.50.4000.1200.20.--	4000	1160	2330	20	>90	A++
Wide beam angle: 34°		P _{el} = 8,9 W, U _{typ.} = 29.2 V				
11.50.3000.1200.34.--	3000	1025	2170	34	>90	A++
11.50.2700.1200.34.--	2700	1020	2050	34	>90	A++
11.50.4000.1200.34.--	4000	1160	2330	34	>90	A++

* Production tolerance of luminous flux, voltage and power consumption: ±10%